



MONTHLY MEMBERSHIP PROGRESS REPORT

District 303

Results as of: 03/31/2018

GMT: TERESA MANN

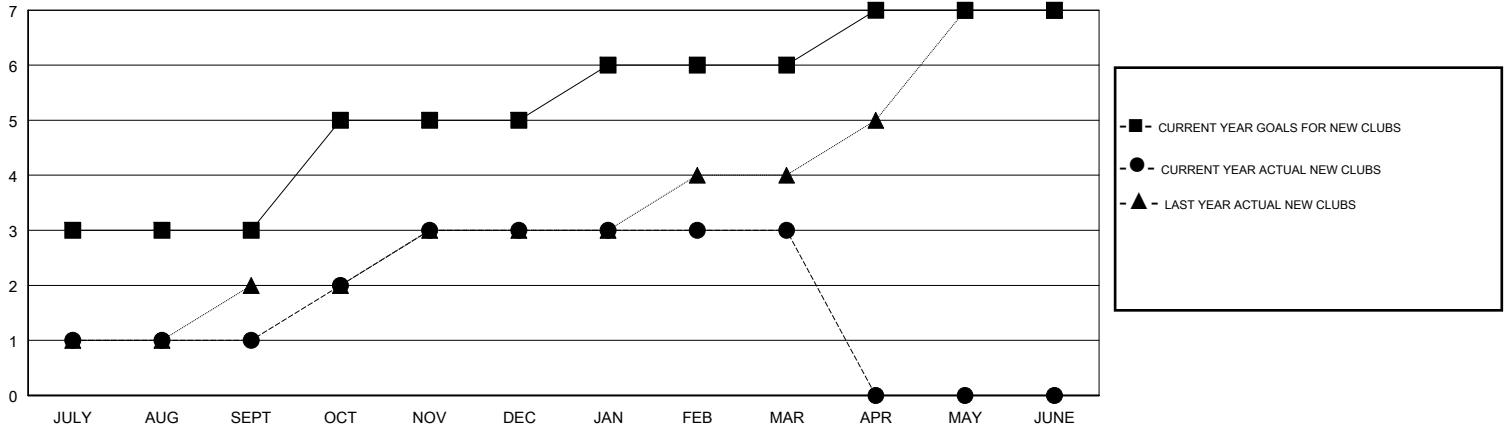
LOCATION HONG KONG, CHINA

GMT CA

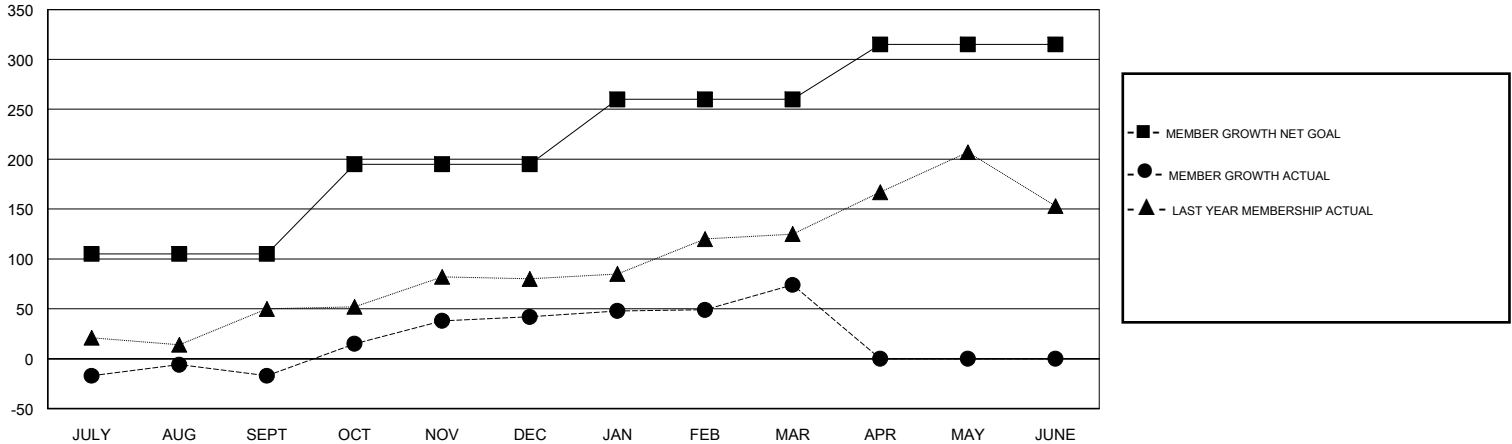
Clubs			
RESULTS FOR 2017-2018			
QUARTER	NEW CLUB GOAL	NEW CLUBS	DROPPED CLUBS
JULY/AUG/SEPT	3	1	0
OCT/NOV/DEC	2	2	0
JAN/FEB/MAR	1	0	0
APR/MAY/JUNE	1	0	0

Members			
RESULTS FOR 2017-2018			
QUARTER	MEMBER GROWTH NET GOAL	MEMBER GROWTH ACTUAL	DROPPED MEMBERS ACTUAL (including transfers)
JULY/AUG/SEPT	105	175	185
OCT/NOV/DEC	90	90	28
JAN/FEB/MAR	65	68	36
APR/MAY/JUNE	55	0	0

GOALS AND ACTUAL NEW CLUBS CUMULATIVE



GOALS AND ACTUAL MEMBERS CUMULATIVE



DROPPED CLUBS: 0	70 CLUBS OF 89 ADDED 1 OR MORE NEW MEMBERS	<u>GENDER DISTRIBUTION</u>	
DROPPED MEMBERS		MALE	1,617 (72.35%)
DECEASED	9	FEMALE	618 (27.65%)
CLUB CANCELLED	0	Women Percentage Fiscal Year Goal: 28%	
OTHER	240	TOTAL FAMILY UNIT MEMBERS	68
TOTAL	249	FAMILY MEMBERS PAYING HALF DUES	38

[CLICK HERE FOR CUMULATIVE MEMBERSHIP DATA](#)